

INSIDE THIS ISSUE

- 1 [Welcome](#)
- 1 [Just a Reminder: What do the colors around the points mean?](#)
- 2 [The Great Central U.S. Shakeout Mapping Challenge!](#)
- 2 [VA Law Enforcement Facilities Mapping Challenge FINISHED!](#)
- 3 [A Letter from the Past, By Kent W.](#)
- 3 [Stories from the "field", by Kim](#)
- 3 [Have a Story or Photo You'd Like to Share?](#)
- 4 [USGS Historical Topographic Maps](#)
- 5 [Congratulations to Volunteer rjerrard!](#)
- 6 [TNMCorps Team Corner](#)
- 6 [New Recognition Category Members](#)

Welcome!

Welcome to our Newsletter! We hope you enjoy reading it as much as we enjoy putting it together. Please feel free to email us with suggestions, pictures, or tips and tricks at nationalmapcorps@usgs.gov.

Just a Reminder: What do the colors around the points mean?

We have five different colors around the icon that have been used in The National Map Corps. Each color represents the status of the icon in the map.



Red: Unedited - The structure feature has not been edited by a volunteer yet and should **only** be checked using the **Standard Editor**. Advanced Editors may use the **Advanced Editor**.



Green: Edited - The structure feature has been confirmed or corrected by a volunteer using the **Standard Editor**.



***Blue: Peer Reviewed** - The structure feature has been peer reviewed by a volunteer using the **Peer Review Editor**.



***Purple: Advanced** - The structure feature has been corrected or confirmed by an **Advanced Editor**.



***Yellow: USGS Reviewed** - The structure feature has been reviewed by the USGS.

*Please note that all these structure features have already been checked by another volunteer and **do not** need to be checked again.

Tips:

- A Peer Reviewer should only review points with a green border.
- A Peer Reviewer should not peer review their own points. If you are not sure if you previously edited a point, you can check the history link of the point.
- The Advanced Editor has to be extra careful when editing, as the data contributed will not be peer reviewed.
- If you know a point is incorrect and has been edited by an Advanced Editor or Peer Reviewer, please let us know.



The Great Central U.S. Shakeout Mapping Challenge!

On October 15, millions of people all over the world will participate in the Great Shakeout. In support of earthquake preparedness, TNMCorps will be holding a one week mapping challenge in the New Madrid Seismic Zone (NMSZ) in support of the Great Central U.S. Shakeout. The NMSZ includes parts of Illinois, Indiana, Missouri, Arkansas, Alabama, Kentucky, Tennessee and Mississippi. So get ready! Let's see how many emergency response and school points we can update between Sunday, October 11 and Saturday October 17th.

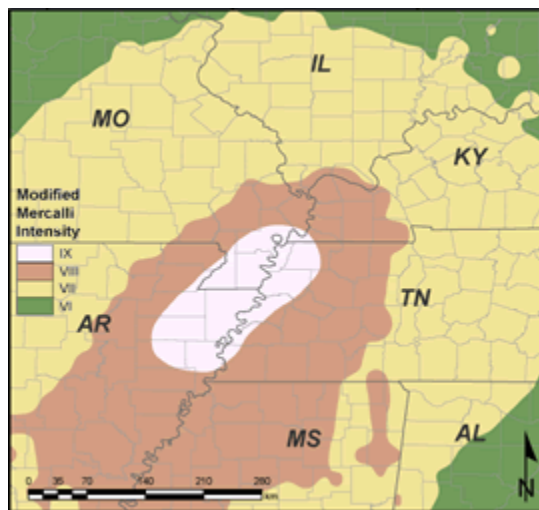
Check out the [mapping challenge page](#) for more information.

Take time to visit the [Great Shakeout's webpage](#) and sign up to participate! The site has a wealth of resources and information about earthquakes and earthquake preparedness.

The image below is from the [Central United States Earthquake Consortium](#) webpage, another good source of information for disaster mitigation.



[20 Cool Facts about the New Madrid Seismic Zone](#)



Volunteers who contribute in the [Challenge](#) area will be recognized on the TNMCorps project site and also tweeted on [The National Map Twitter account!](#)

For those looking for more, visit these resources:

"Did You Feel It?" is another USGS Citizen Science project. If you feel the earth shake, be sure to log your experience at: <http://earthquake.usgs.gov/earthquakes/dyfi/>. It is also interesting to visit the site to see what's been shakin'.

From the USGS Newsroom: [New Simulations of 1811-1812 New Madrid Earthquakes Show Strop and Prolonged Ground Shaking in Memphis and Little Rock](#): "Computer simulations of earthquake shaking, replicating the quakes that occurred in [1811-1812 in the New Madrid seismic zone](#) (NMSZ), indicate that future large earthquakes there would produce major, prolonged ground shaking."

VA Law Enforcement Facilities Mapping Challenge FINISHED!

A BIG thanks to fconley, rjerrard, and msean21 for updating, verifying, adding, and deleting all Prison/Correctional Facility points in Virginia!



Keep your eyes peeled for cemetery mapping challenges coming later this month!

A Letter from the Past

By Kent Wangsgard, TNMCorps Volunteer

For those interested in the Post Office section of the project, a nice Google Maps Street View of Hartville Wyoming will bring up a rare (and more so every day) picture of an Owens-style Mailbox, pole mounted in front of the Office. If you are 50 or less, the chance of having seen one is not too high. They started to disappear in the late 40s and early 50s when they were still painted olive green. Current information indicates that there are approximately 625 left in the US, but very few out on the street.

Need more information? See "Going Postal: A Photo Journal of Post Offices and Places" by Evan Kalish: <http://colossus-of-roads.blogspot.com/2014/04/a-census-of-post-boxes.html> for a great deal of history of the mail box evolution.

The National Map Corps is not just about geography, there is a richness of history deep embedded on items and places that, for most, are ordinary. The National Map Corps is proud to help on the preservation of America's memory.

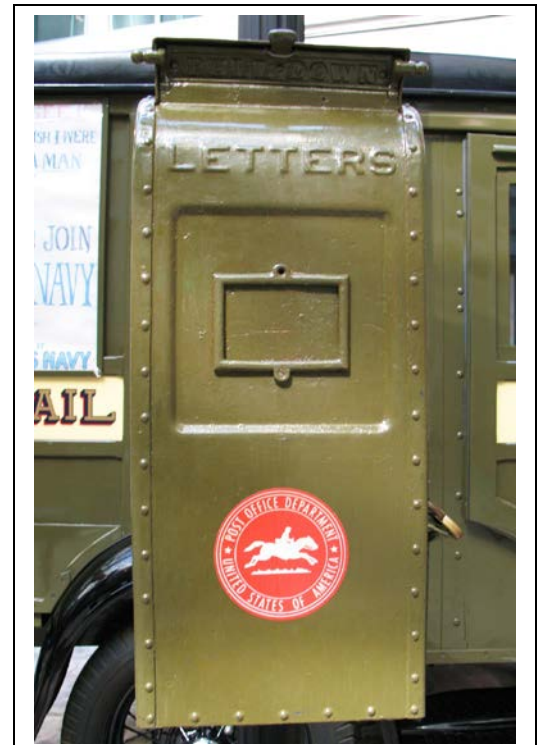
Stories from the "field"

By Volunteer Kim

[Kim is one of the original National Map Corps volunteers from 2000.]

The Kansas Association of Mappers talked about The National Map Corps and geocaching.com in one of their newsletters several years ago.

The National Map Corps asks for information on Public Attractions and Landmarks. Some of the information can be obtained through ['geocaching.com'](http://geocaching.com). This is a GPS family treasure hunt game. Several sites at geocaching.com are in Kansas at Smith and Osborne counties 'Geodetic Center as Close as you can Get' (GC9064); 'Center of the United States' (GC10N63). Some local residents have hosted tours of the Geodetic Center in 2007-2010 (GC14DP9), (GC15XVW), (GC1X9QD), and (GC23MNA). Geocachers also have these geocaches in cemeteries.



Owens Mailbox. Photo by Mr. TinDC. Some rights reserved <https://creativecommons.org/licenses/by/>



Have a story or photo you'd like to share?

We want them! This could be anything from a photo of you verifying a structure or an interesting story (like the one above) that you discovered while editing. Photos, graphics, and stories may be used in future news releases and social media posts. All materials submitted become part of the "public domain," and can be used by USGS in the future unless otherwise specified. Please email them to nationalmapcorps@usgs.gov.



USGS Historical Topographic Maps

Have you ever wanted to look through a window into the past? Well now you can see glimpses of the past using the [USGS Historical Topographic Map Explorer](#). Fast and easy to use...just enter in a location and you are on your way!

USGS Historical Topographic Map Explorer

Go to the location you want to explore, then click on a place to see its historical maps.

Search: Chicago, Illinois, United States

Slide transparency on map to compare, or drag/drop to re-order maps.

Chicago 1889 download map

Historical Map Scales

- 250,000
- 125,000
- 62,500
- 24,000
- 12,000

Timeline: 1885, 1890, 1895, 1900, 1905, 1910, 1915, 1920, 1925, 1930, 1935, 1940, 1945, 1950, 1955, 1960

Peek through another window by using the [USGS TopoView](#) and gain access to over 178,000 digitized maps dating back to 1884. In addition, they've created a great [video](#) to help you get started.

ngmdb.usgs.gov/maps/TopoView/viewer/#10/41.8379/-87.7711

topoView

Search: Chicago

MAP SCALES

- 250,000
- 100,000
- 62,500
- 48,000
- 24,000
- SHOW ALL

CHICAGO, IL

U.S. Geological Survey Historical Topographic Map Collection, scale 1:62,500 (1891 Edition)

1891

USGS science for a changing world

MAP RECORDS: 31

Best of all? You can download maps FREE of charge from either application! So go ahead and get your historical groove on!

Congratulations to Volunteer rjerrard on Achieving the Top Badge: Biplane Spectator!

In case you missed the facebook post highlighting TNMCorps volunteer rjeerrard's ascent to the top recognition category, check it out! Congratulations rjerrard, and thank you for all that you do! This project wouldn't exist without the dedication of volunteers like you!



U.S. Geological Survey (USGS) added 2 new photos.

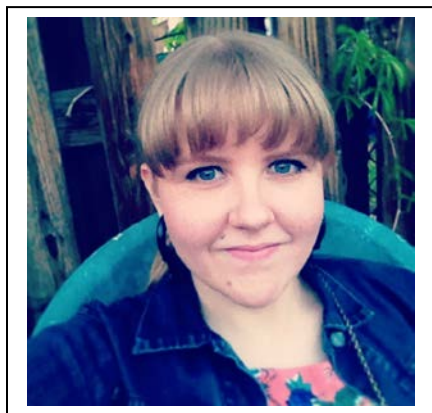
15 mins · 🌐

New Biplane Spectator: The USGS crowdsourcing project called The National Map Corps uses citizen scientists to validate or edit structures to improve topographic maps. To reward and recognize those volunteers, TNMCorps assigns points to the submissions which lead to virtual badges increasing awards levels. One of the more active data providers to reach the top award, the Squadron of Biplane Spectators, goes by the handle of "rjerrard": His story: "I'm a lifelong cartography enthusiast and mapmaker. I mostly do hobby mapping but have done small commercial projects. I am on the USGS website frequently, looking at quadrangles of interest. Recently they added the historic, older maps and this has been a new source of fascination (there's a tip for you checkers of ancient, abandoned cemeteries not shown on the "classic" topos). I noticed the National Map Corps project, and added a few points. I never thought I would stick with it for long, but I've found it remarkably educational to review diverse areas and see how they manage resources to serve the changing demographics of our society. And it's just fun to play with the icons and aerial images!" You can join "rjerrard", along with hundreds of other volunteers, and contribute to The National Map. Sign in and begin editing points today! <http://1.usa.gov/1Ky0sub>



TNMCorps Team Corner

Get to know the TNMCorps
Team members!



Erin is a Geographer at the US Geological Survey, and has been working on The National Map Corps for close to four years. She started at the Survey through the student intern program in 2010 while finishing up her B.A. in Geography and Environmental Studies at the University of Colorado Denver. While there, she also earned a certificate in GIS, which led to her current career in the National Geospatial Program. As part of TNMCorps, Erin works on documentation, data processing, quality control and assessment, and outreach. When she isn't recruiting volunteer mappers, she likes to hang out with her husband and her dog and cat, go see live music, and check out all that wonderful Denver, Colorado has to offer.

New Recognition Category Members



Squadron of Biplane Spectators (6000-6999)

- rjerrard



Ring of Reconnaissance Rocketeers (5000-5999)

- ThatJenn
- HGeisler



Flock of Winged Witnesses (4000-4999)

- KentRobert



Theodolite Assemblage (2000-2999)

- John Margraf



Alidade Alliance (1000-1999)

- revent



Stadia Board Society (500-999)

- rockhound
- Cartograsaurus



Circle of the Surveyor's Compass (200-499)

- AReynolds



Pedometer Posse (100-199)

- AReynolds
- JDohoda
- notmyrealname2112
- SilenceDogood



Society of the Steel Tape (50-99)

- Micah Cochran
- digman
- Trillium
- Harris
- AReynolds
- JDohoda
- Swamp Yankee
- MGeologyMusso



Order of the Surveyor's Chain (25-49)

- | | | |
|-------------------|----------------|------------------|
| • eI_ | • digman | • Fernwolf |
| • MichaelaRoberts | • Doug_D | • SpencerGThomas |
| • GamerGenius64 | • Swamp Yankee | • MGeologyMusso |
| • mta | • rocks | |
| • Micah Cochran | • AReynolds | |
| • dktrapeze | • JDohoda | |
| • Mordecai | • orcasolace | |
| • Bruce T | • mprgal | |

CONTACT US AT: nationalmapcorps@usgs.gov for suggestions, questions, additions to the next newsletter, or if you would like to be removed from the email list.

Or call Elizabeth McCartney at 573-308-3696

