



TNMCorps News

VOLUME 2, ISSUE 1

THE NATIONAL MAP CORPS

FEBRUARY 2016

INSIDE THIS ISSUE

- 1 Welcome
- 1 Let's Go All the Way to 200K!
- 2 The Advanced Editor Role
- 2 Federal Courthouses - Pilot Study
- 3 What do I do with stacked cemetery points?
- 4-6 Step by Step Editing Tips: Post Offices
- 6 Help us with the latest Mapping Challenge!
- 7 Importance of Good Addressing
- 7 Have a story or photo you'd like to share?
- 7 International Year of the Map - Get the Patch!
- 8 TNMCorps Team Corner
- 8 New Recognition Category Members

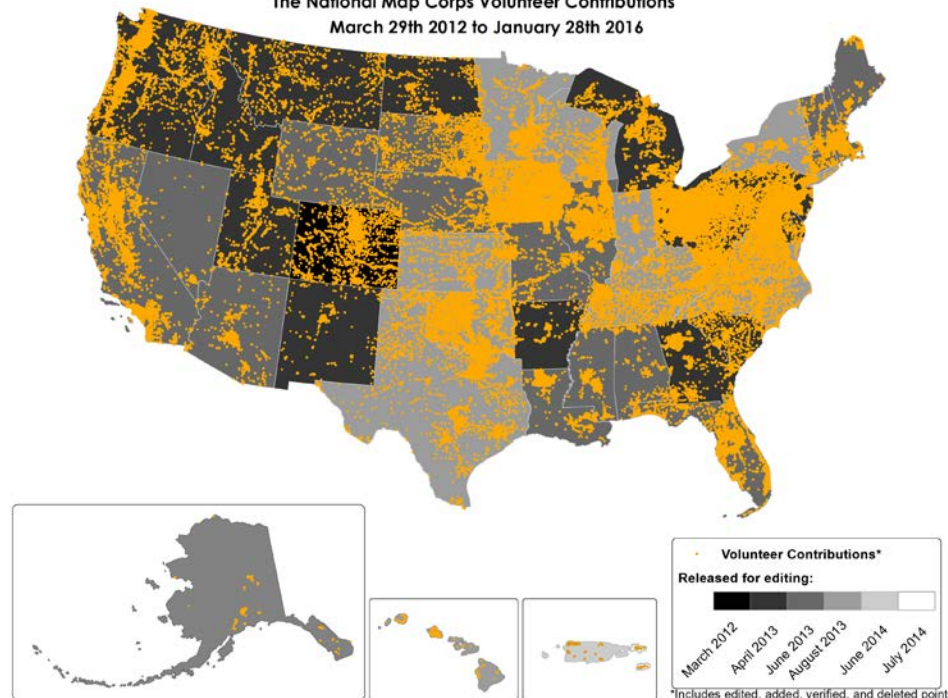
Welcome!

Welcome to our Newsletter! We hope you enjoy reading it as much as we enjoy putting it together. Please feel free to email us with suggestions, pictures, or tips and tricks at nationalmapcorps@usgs.gov.

Let's Go All the Way to 200K!

Hey volunteers! We are getting close to another major milestone. Thanks to YOUR continuing efforts we are fast closing in on 200,000 total contributions! A year ago we were asking you to help us reach 100,000 contributions, and now just a year later you can help us reach this outstanding accomplishment by editing points! If you are not sure what to edit, check out our current [mapping challenge](#). As always, we couldn't do it without you!

The National Map Corps Volunteer Contributions
March 29th 2012 to January 28th 2016



The Advanced Editor Role

Have you ever wondered what the purpose of the different editing roles is in The National Map Corps? Our project utilizes multiple editing roles so that volunteers with various levels of experience have the freedom to contribute and review data. The Advanced Editor Role is a unique role that volunteers can attain after editing at least 200 points. Volunteers are eligible for the Advanced Editor Role after passing a quality assessment review of a random sample of 30 points. When conducting the quality assessment, we review the overall accuracy of the points, including things like name and address formatting and point placement. Advanced Editors are responsible for correcting capitalization and formatting errors for points as well as updating the information in the "Optional" tab of the point feature. Points that have been reviewed by Advanced Editors are not subject to peer review by other volunteers, which speeds the process of the points being added to the National Structures Database. All editing roles are equally important to The National Map Corps Project, and we encourage volunteers to pursue every role that suits their interests!

The Advanced Editor Role is a unique role that volunteers can attain after editing at least 200 points.



Purple points have been checked by an Advanced Editor.



[Eunice 'Biki' Wilson, 1984](#) - LSE Library

Federal Courthouses – Pilot Study

Keep your eyes open for a new icon on the map! We will be conducting a study on the ability of volunteers to collect a complete dataset from scratch. That means that each individual point will have to be created. There are over 100 Federal Courthouses spread across the U.S. Within the next few weeks, complete instructions will be provided including suggested resources. Until then, focus on the other [10 structure features](#) available for editing. We are confident you are up to the challenge!!!

Keep your eyes open for a new icon on the map!

What do I do with stacked cemetery points?

Some of you may have run across a situation where you find a stack (possibly slightly offset from each other) of cemetery points. If you haven't seen this personally, you may have seen the [Q&A question](#) (P.S. check out the [Q&A](#) if you haven't already!) about it. The cemetery points we load into the editor come from The National Map database known as the [Geographic Names Information System](#) (GNIS). These stacked cemeteries have "unknown coordinates", and therefore have been placed in the center of the county. If you find points like this, the ideal scenario is for you to figure out the correct location and move the existing point, because these points have GNIS IDs, which are unique identifiers that carry the history of a feature.

In the editor, a stack of points may not be visible while zoomed out, or it may look strange, as seen in the image to the right.

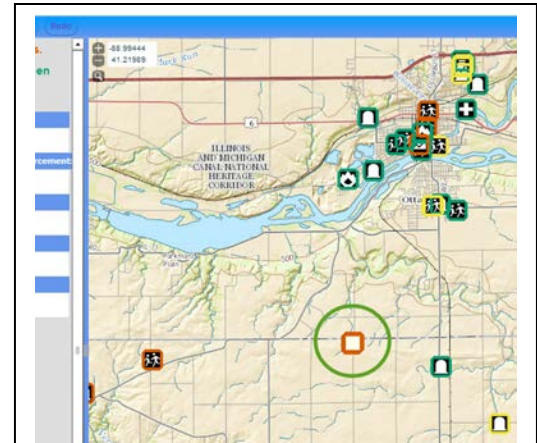
Again, if possible, please move these to the correct location. That can be a tall order, but remember, these points are already in the county they belong in so you can start your research from there.

You may find a brief history of points with "unknown coordinates" interesting, as explained by the National Structures Dataset supervisor:

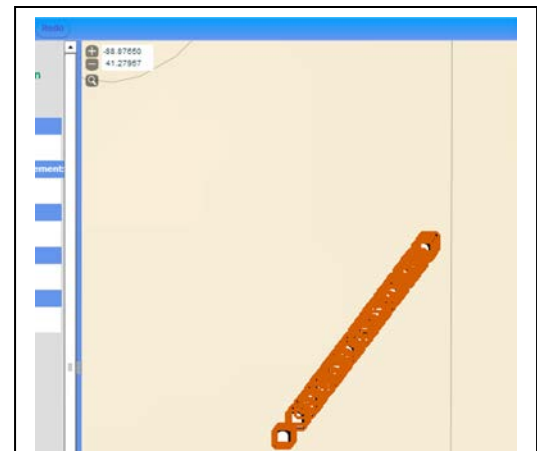
These features originate in the Geographic Names Information System (GNIS) and were entered into the GNIS when it was a table-based system, before it was converted to a geospatial database. The information was submitted to GNIS by various entities or interested public groups and from a wide variety of sources, such as cemetery lists, genealogy reports, local phone books, etc. The exact coordinate of a feature was unknown when they were entered into the GNIS, but some location information, such as a county, was known. When the GNIS was converted to a spatial database, these "unknown" coordinated were assigned a value at the center of the county listed in the record. This results as stacked features in the same position in the center of the county when displayed in a GIS system.

They are a small percentage of the total cemeteries in the system. In addition, because GNIS is primarily a Names database, this type of record was acceptable for many features at that time.

In addition, if one were to look up the GNIS ID in the system, it should list "unknown" under the coordinate pair section and the map name but the county is populated. See example to the right. You can see the source of this entry was USGenWeb and it was created on 19-Nov-2001, before GNIS was converted to a geodatabase.



Zoomed out you may not be able to tell that it is a stack, or as seen here, the icon(s) may look weird.



Zoomed in you will find an offset stack of points. Move the existing points to the correct location if possible.

ID: 1945990
 Name: Holland Cemetery
 Class: Cemetery ([Definitions](#))
 Description: Exact location unknown, although probably located in the vicinity of the Bethlehem Methodist USGenWeb - Data received from a state coordinator or from a state web page. The USGenWeb county. Each page is the property and responsibility of an individual volunteer with consistent an area to post queries. All information is freely available to the public. The year of posting a
 Citation:
 Entry Date: 19-Nov-2001
 *Elevation: /
 *Elevations in feet/meters from the [National Elevation Dataset](#)

Counties

Sequence	County	Code	State	Code	Country
1	Haralson	143	Georgia	13	US

Coordinates (One point per USGS topographic map containing the feature, NAD83)

Sequence	Latitude(DEC)	Longitude(DEC)	Latitude(DMS)	Longitude(DMS)	Map Name
1	Unknown	Unknown	Unknown	Unknown	Unknown

Step by Step Editing Tips: Post Offices

1) FIND AN EXISTING POST OFFICE POINT TO EDIT

- After you “Log in”, click on the editor you will be using (most people will be using the Standard Editor) to start editing.

View **Standard Editor** Peer Review Editor Advanced

- If you know which city and state you want to edit in, use the search box on upper left side of the map to go to a particular part of city or state.
- If you don't have a particular area that you want to edit, pan around any area of the map to see the post office icons that need to be checked.
- The post offices you should edit are determined by which role you are editing in:
 - If you are a new user, or want to edit points that haven't been checked yet, use the **Standard Editor** and check points with a **red border**.
 - If you are a more experienced user, and want to verify points that have been edited by other volunteers, use the **Peer Review Editor** and check points with a **green border**.
 - If you have been given access to the **Advanced Editor**, you may edit any points (**red**, **green**, or **blue**) on the map.

VGI Structures



The National Map Corps

Search

examples: 'Denver', 'Blake Street, Denver, Colorado'
more examples... Where am I?



2) VERIFY THAT THE SELECTED POST OFFICE EXISTS AND CHECK THE NAME


- Click a post office icon on the map and you will see the post office name under the “Required” tab. Please be sure to check and update the name if necessary, as this is required.

TIP: It is necessary for **all users** to fill out the name and place the point on the correct building. Adding the address is optional for **Standard Editors** but it is required for **Peer Reviewers** and **Advanced Editors**.

Example: Franklin Post Office

- Make sure to check the post office name from the [US Postal Service Website](#) to see if the post office still exists and the name is correct. On this website there is a link to the [Find Locations web page](#) where you can do a search for a particular post office.

 **USPS.COM**




Post Office ?

? History for Structure point


Required Optional


Name: **Franklin Post Office** ?

Quick Tools ^

 Tracking

Add a Tracking Number >

 My USPS

 **Find USPS Locations**

Step by Step Editing Tips: Post Offices, Continued

- We accept only the “Post Offices”, “Village Post Offices” and “Contract Postal Units (CPU)” in our National Structures datasets. To do a search for only these three types, select “Post Offices and Approved Postal Providers” from the “Location Types” list and then click on the “Refine search” link, make sure that only “Post Offices”, “Village Post Offices” and “Contract Postal Units” are checked.

Location Types *City and State, or ZIP Code™

Post Offices™ and Approved Postal Providers™ Ex. 12345

Refine search

Post Offices™
 Contract Postal Units
 Village Post Offices™
 National Retailers
 Alternate Locations to Buy Stamps

TIP: If you want to review all of the Post Offices for a city, go to the [USPS Find Locations web page](#), restrict the search to Post Offices, Village Post Offices and Contract Postal Units, type in the city of interest (or a zip code) and select a reasonable search radius. Then go through all the locations and make sure they are on the map.

- The correct way to name a Post Office is: Name (as found on the USPS site) + Post Office. Using the search results for the example (see below) the correct name would be “Franklin Post Office.”



NOTE: The correct way to name a Contract Postal Unit is: Name + Contract Postal Unit or Name + CPU.

- You should spell out any abbreviations and fix names in all caps to proper case, if applicable. Please see the [Name and Address Formatting page](#) in the [Standard Editing User Guide](#).

NOTE: If you find a point for a post office that no longer exists please delete the point using the delete key on your keyboard (be sure to thoroughly research first) and make sure to click “Save”.

NOTE: If a point for a post office building exists but the post office has changed (name, address, etc.) please update and save the existing point. Don’t delete it and create a new point.

3) CHECK ADDRESS

- Under the “Optional tab” you will find the physical address. Adding the address is optional so if you can’t find the address from an authoritative source just leave this field blank (Peer Reviewers and Advanced Editors are encouraged to add the address information). If you add the address please make sure the information is from an [authoritative source](#). In the case of post offices, the authoritative source is always the [USPS site](#).

Step by Step Editing Tips: Post Offices, Continued

4) VERIFY THE POST OFFICE POINT PLACEMENT

- On the map, please make sure to zoom in to the full extent to put the icon on the building.

NOTE: There are many resources like Google, Bing and others, which can be used to help locate the post office but **do not** use them as your primary source of information.

NOTE: USGS guidelines stipulate that only official USPS facilities should be included in the National Structures dataset.



5) CLICK THE "FINISHED EDITING" BOX AND THE "SAVE" BUTTON

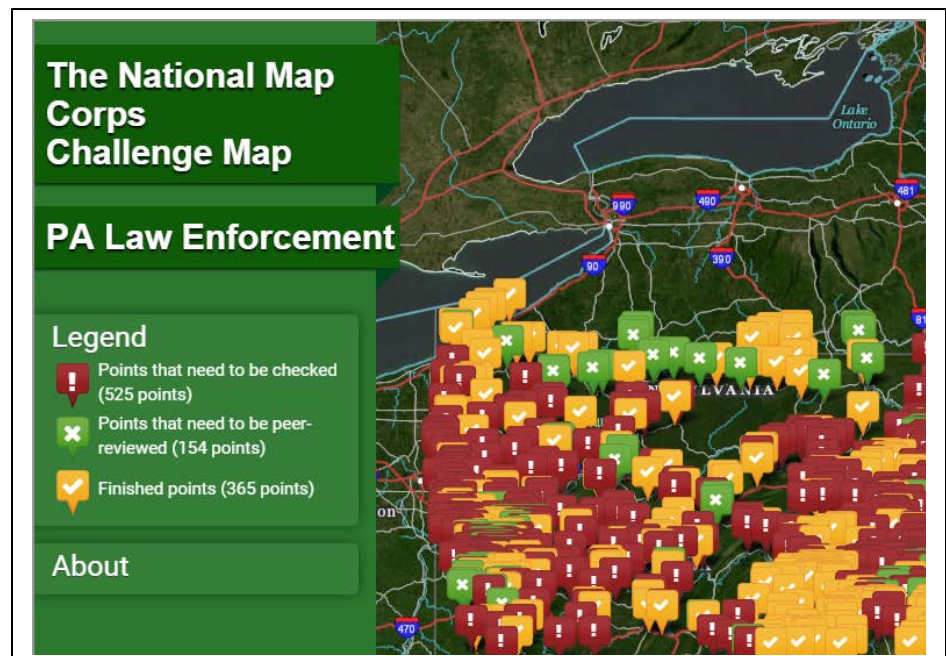
- After you have verified that the post office exists and verified that the name, address, and location are correct, don't forget to check the "Finished Editing" box under the "Required" tab and click the "Save" button.



The screenshot shows the editing interface for a post office. At the top, there are buttons for 'Save' (highlighted in green), 'Help', 'Undo', and 'Redo'. Below these is a dropdown menu labeled 'Post Office' with an information icon. A section titled 'History for Structure point' is visible. Under the 'Required' tab, there is a text input field for 'Name' containing 'Franklin Post Office'. At the bottom, the 'Finished Editing' checkbox is checked and highlighted in yellow.

Help us with the latest Mapping Challenge!

Have you participated in a mapping challenge yet? If not, [check it out!](#) If you've participated in a challenge but haven't taken a look recently, stop by to see what's new! We have a terrific new and improved status map that shows what still needs to be done for the current challenge. Mapping challenges help us get data ready in advance of [US Topo](#) updates. Help us check all Pennsylvania [Law Enforcement](#) points before the maps get updated! A lot of work has been done, but this is our biggest mapping challenge yet and there is still a lot to do. Volunteers who participate will be recognized on the mapping challenge page and [The National Map Twitter](#) account.



Importance of Good Addressing

Volunteer mprgal sent us an interesting but tragic article showing the importance of good addressing. Although emergency response typically uses databases other than ours, this article shows that sometimes volunteers have to dig a little deeper for the correct address.

[Chicago Tribune Article: City Goes After Vanity Addresses](#)



One Magnificent Mile - [Photo by Roman Boed.](#) [CC copyright.](#)

Have a story or photo you'd like to share?

We want them! This could be anything from a photo of you verifying a structure or an interesting story that you discovered while editing. Photos, graphics, and stories may be used in future news releases and social media posts. All materials submitted become part of the "[public domain](#)," and can be used by USGS in the future unless otherwise specified.

Please email them to nationalmapcorps@usgs.gov.

International Year of the Map – Get the Patch!

In celebration of these common passions and in honor of [GIS Day](#) and [International Map Year](#), TNMCorps is encouraging volunteers to edit 2,016 features between GIS Day 2015 and GIS Day 2016. Each of those submitted edits are worth a point. Volunteers who contribute 2,016 edits and thus earning 2,016 points between November 18, 2015 and November 16, 2016 will be awarded with a special edition collectable embroidered patch.

"We're excited about this ambitious challenge to our current and new National Map Corps members," said Julia Fields, Deputy Director of the USGS National Geospatial Program, "and we are looking forward to seeing the patches on backpacks and jackets!"



TNMCorps Team Corner

Get to know the TNMCorps
Team members!



Somayeh is a student contractor of The National Map Corps project and has been with the team for over three years. While she was completing a Master's degree in Environmental Science in 2012, she enrolled in a course on GIS, which allowed her to gain new insight into everyday life. The course served as an inspiration towards her work with the USGS. She is interested in advancing her career by getting a second master degree in GIS. Somayeh works on quality assurance, data quality assessment and documentation. She is passionate about geography and digital cartography with integrated in GIS.

New Recognition Category Members



Squadron of Biplane Spectators
(6000-6999)

-



Ring of Reconnaissance Rocketeers
(5000-5999)

- KentRobert



Flock of Winged Witnesses
(4000-4999)

-



Family of Floating Photogrammetrists
(3000-3999)

- msean21



Theodolite Assemblage
(2000-2999)

-



Alidade Alliance
(1000-1999)

-



Stadia Board Society (500-999)

- Calvin
- geo163
- SaraKosari



Circle of the Surveyor's Compass (200-499)

- mprgal
- SaraK
- pampa
- RIsailor



Pedometer Posse (100-199)

- D82
- GeospatialBeatles
- ccharle2
- StevenHill
- pampa
- mprgal
- hotwine
- Covert9
- SaraK
- RIsailor



Society of the Steel Tape (50-99)

- D82
- pampa
- GeospatialBeatles
- Bud W
- Claire K
- ccharle2
- StevenHill
- sasha
- Yashraj Rajeshirke
- itsmetree
- Mary B
- Covert9
- Ruribe
- rock_detective
- RIsailor
- SaraK
- knedlog
- Eolian
- Nikunj Khelurkar
- hotwine



Order of the Surveyor's Chain (25-49)

• D82	• bonnieblue85	• drees
• Jnb2387	• sasha	• CourtneyRose
• itsmetree	• Lilitleet	• Ruribe
• NickYoung987	• Eolian	• rock_detective
• Covert9	• Yashraj Rajeshirke	• RIsailor
• Bud W	• Mary B	• SaraK
• ccharle2	• hotwine	• MotherEarth
• StevenHill	• bouchar2	• knedlog
• aestiltner	• stonewall072	

CONTACT US AT: nationalmapcorps@usgs.gov for suggestions, questions, additions to the next newsletter, or if you would like to be removed from the email list.

Or call Elizabeth McCartney at 573-308-3696

